



AUTONAUTIC
the compass specialist

PRODUCT DATASHEET

COMPASS

CHE-0078 OVERHEAD COMPASS

SKU CHE-0078

Overhead Wheelmark/SOLAS compass

CHE-0078 OVERHEAD COMPASS



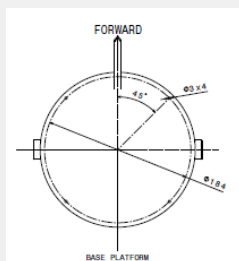
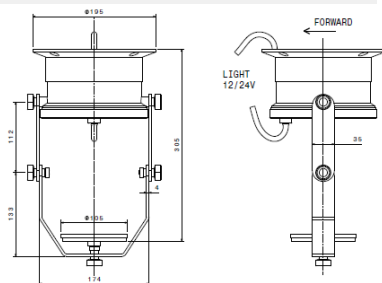
OVERVIEW

The CHE-0078 model is a compact, rugged, and cost-effective steering compass suitable for professional coastal navigation and larger yachts. The CHE-0078 overhead compass meets European MED ("Wheelmark") and all important international specifications.

It comes with B+C compensation built-in and D-Quadrantal correctors for steel hulls are available.

FEATURES

- 125mm 5,75° dial
- 1° graduation
- 12/24 V lighting
- Individual MED/SOLAS certificate included
- Repairable
- 5 years warranty
- B+C correctors built-in
- Hardened steel pivot and sapphire jewel
- 90 degree lubber lines for easy reading
- Overall dimensions 195 x 110mm + mirror



APPROVALS

- Directive 2014/90/EC on marine equipment
- ISO 25862:2019
- ISO 9001 certified management system


**ISO
25862**

Click [here](#) to see EC
Type Examination
(Module B) Certificate

Member of CISQ Federation


**CERTIFIED MANAGEMENT SYSTEM
ISO 9001**

www.autonauticinstrumental.com
info@autonauticinstrumental.com
Agricultura 22, El Masnou (08320), Barcelona
+34 93 540 99 49



www.autonauticinstrumental.com
info@autonauticinstrumental.com

The world's lead specialist company in magnetic compasses