



**AUTONAUTIC**  
the compass specialist

# PRODUCT DATASHEET

COMPASS

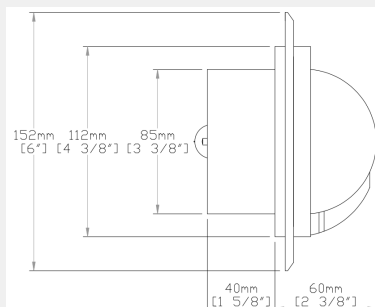
## **C12PLUS-0020 FLUSH-MOUNT LIFEBOAT & DAVITS**

---

SKU C12 PLUS-0020

Flush Mount Wheelmark/SOLAS compass

# C12PLUS-0020 FLUSH MOUNT



## OVERVIEW

The C12 Plus is a versatile flush mount compass suitable for both commercial and leisure vessels.

The flat card design requires that the compass be installed close to the helm position and low down, for example when the vessel is helmed from the standing position. Typical applications would include being installed on the navigation console or sitting atop a steering pedestal.

The compass features a fairly wide flange so it can be a good choice when replacing an existing compass - the flange sizes allows installation where a large aperture has already been cut or can be used to cover fade marks on the console.

And with features such as corrosion-resistant materials and sealed construction to prevent water intrusion this compass provides reliable heading source for safe navigation at sea.

## FEATURES

85mm conical card

5° graduation

Anti-glare screen

12/24 V lighting

Optional compensation kit

Individual MED/SOLAS certificate included

100% Repairable

Exclusive 5 years warranty

## APPROVALS

Directive 2014/90/EC on marine equipment

ISO 25862:2019

ISO 9001 certified management system



SOLAS

**ISO  
25862**

Click [here](#) to see EC Type Examination (Module B) Certificate

Member of CISQ Federation


**CERTIFIED MANAGEMENT SYSTEM  
ISO 9001**

www.autonauticinstrumental.com  
info@autonauticinstrumental.com  
Agricultura 22, El Masnou (08320), Barcelona  
+34 93 540 99 49



[www.autonauticinstrumental.com](http://www.autonauticinstrumental.com)  
[info@autonauticinstrumental.com](mailto:info@autonauticinstrumental.com)

*The world's lead specialist company in magnetic compasses*